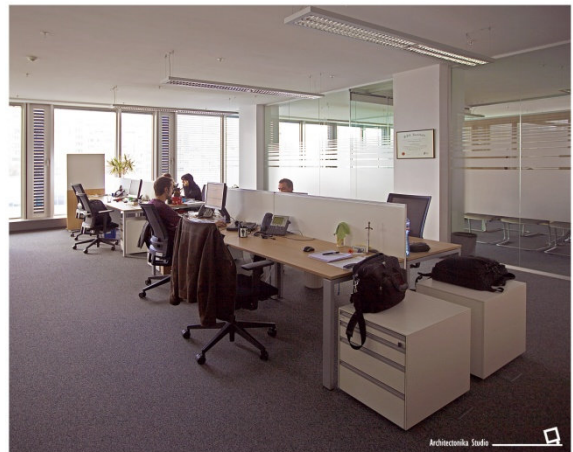
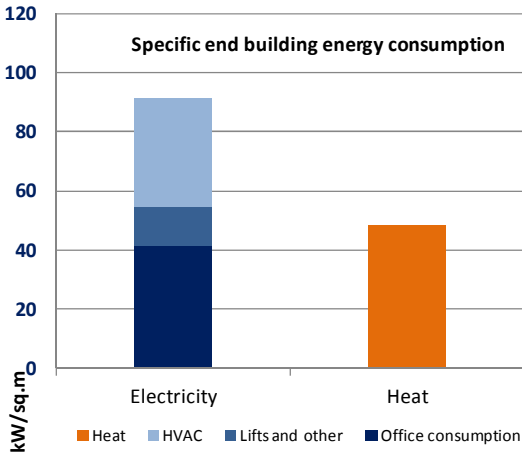
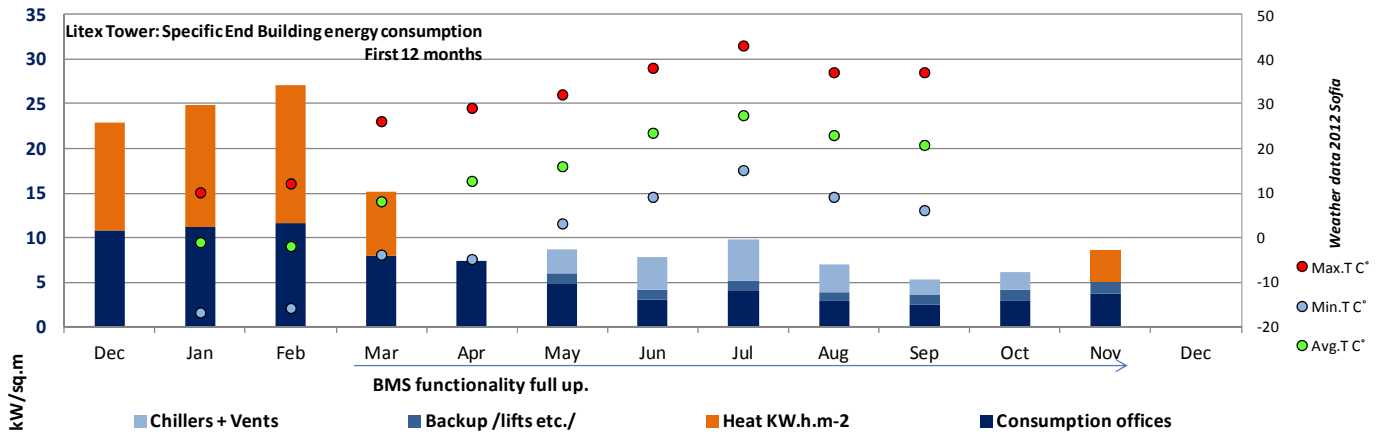
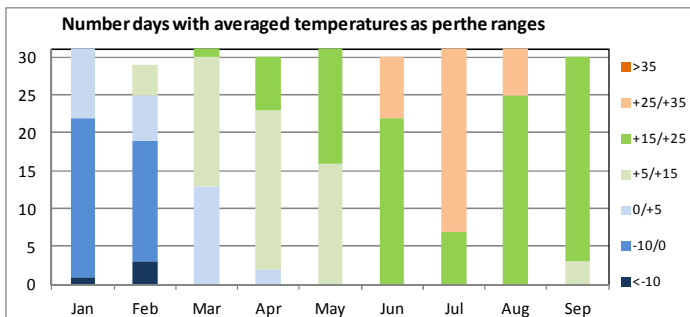
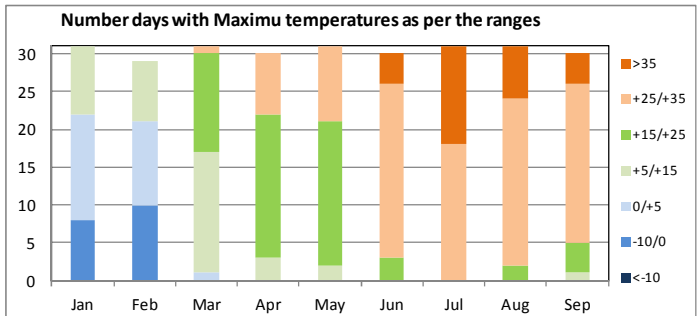
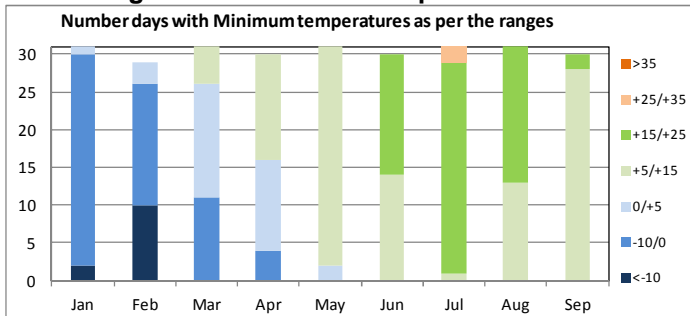


Litex Tower first 12 months energy consumption - monitoring

Build up area 19097 sq.m
 Office area: 9949 sq.m
 Building occupation:
 Dec. 2011/Feb. 2012 less than 50% / interior installations.
 Mar. 2012 - over 80%
 BMS full operational since 20 Feb. 2012.



Meteorological data Sofia Jan-Sep 2012



	Max	Avg.	Min
Jan	10.0	-1.2	-17.0
Feb	12.0	-2.1	-16.0
Mar	26.0	8.0	-4.0
Apr	29.0	12.6	-5.0
May	32.0	15.9	3.0
Jun	38.0	23.4	9.0
Jul	43.0	27.4	15.0
Aug	37.0	22.9	9.0
Sep	37.0	20.7	6.0
Range:	43.0		-17.0